



The Monitoring Group



About The Monitoring Group

Anti racist charity that turns 40 this year

Our aims are:

- To promote good race relations
- To advance race relations by means of education and awareness raising
- To relieve the needs of those who are distressed or suffering violence or harassment.



Immigraton & Domestic Violence

Migrant women may face difficulties accessing support due to:

- Language barriers
- Not knowing where to get help
- Being accompanied by relatives to health care consultations
- Having different ways of expressing their suffering

This makes the uncovering of domestic violence as experienced by migrant women challenging, for primary care and other professionals.



Image from PICUM



Image by Reuters

Domestic Violence

What is domestic violence?

- Any incident or pattern of incidents of controlling coercive or threatening behaviour, violence or abuse between those aged 16 or over who are or have been intimate partners or family members regardless of gender or sexuality. This can include, but is not limited to, the following types of abuse:
 - Psychological
 - Physical
 - Sexual
 - Financial
 - Emotional”



Image: MobileODT



Gerolamo Auricchio/EyeEm, via Getty Images

Migrant Women: The Media Narrative



The screenshot shows the MailOnline website interface. At the top, it displays the date "Saturday, Oct 16th 2021 3PM 15°C" and a 5-day weather forecast. The main navigation bar includes categories like Home, News, U.S., Sport, TV&Showbiz, Australia, Femail, Health, Science, Money, Video, Travel, Best Buys, and Discounts. Below this is a "LiveScore" banner with the text "IT'S MORE THAN A SCORE" and an image of a soccer game. A row of six small article thumbnails is visible, with the first one titled "Muslims from Southend's". The main article headline reads: "Risking all to reach Britain: Mother clings to baby and woman is taken ill as RNLI helps latest group of desperat migrants ashore - after nearly 2,000 landed in last week". Below the headline is a list of bullet points: "• RNLI boat carrying asylum seekers arrives at Dungeness today with one person carried from it on a stretc", "• Another group of migrants are brought into Dover on a Border Force vessel as Channel crossings continu", "• More than 14,000 migrants have already crossed Channel since January, compared with 8,410 for all of 2", and "• Government plans to spend £200million on fleet of patrol boats to replace Border Force's five ageing cut". At the bottom of the article, it says "By MARK DUPELL FOR MAILONLINE" and "PUBLISHED: 16:00, 13 September 2021 | UPDATED: 22:06, 13 September 2021". Social media sharing icons for Facebook, Twitter, and LinkedIn are visible at the bottom right of the article content.

What language is used by the UK media to describe migrant women?



Impact: Migrant Women

- Migrant women are often overlooked in people's conversations about racism, sexism and classism even though they face a unique combination of all 3 of these forms of discrimination simultaneously
- This 'intersectional invisibility' means that some movements and organisations that purport to help Migrant women may be contributing to their marginalisation. It's important Migrant women are listened to, and have the space to lead.



Image: Women's Safety NSW

The Domestic Violence Bill

This bill has been described as groundbreaking but it leaves out migrant and Black and racially minoritised women. It would be important to make these key points:

1. Include Black and racially minoritised women
2. Secure their protection before enforcement
3. Firewall to protect access to services
4. Extend the Destitute Domestic Violence Concession (DDVC)
5. Protect and extend specialist services
6. Review future legislation

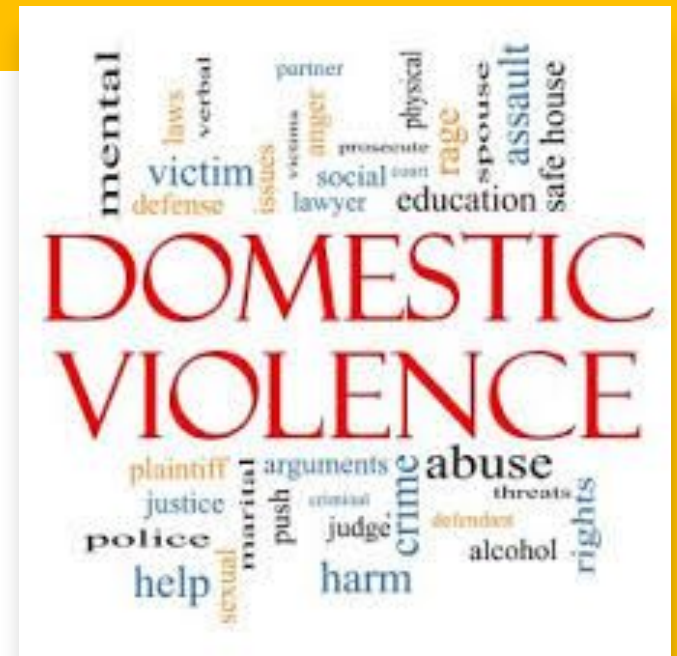


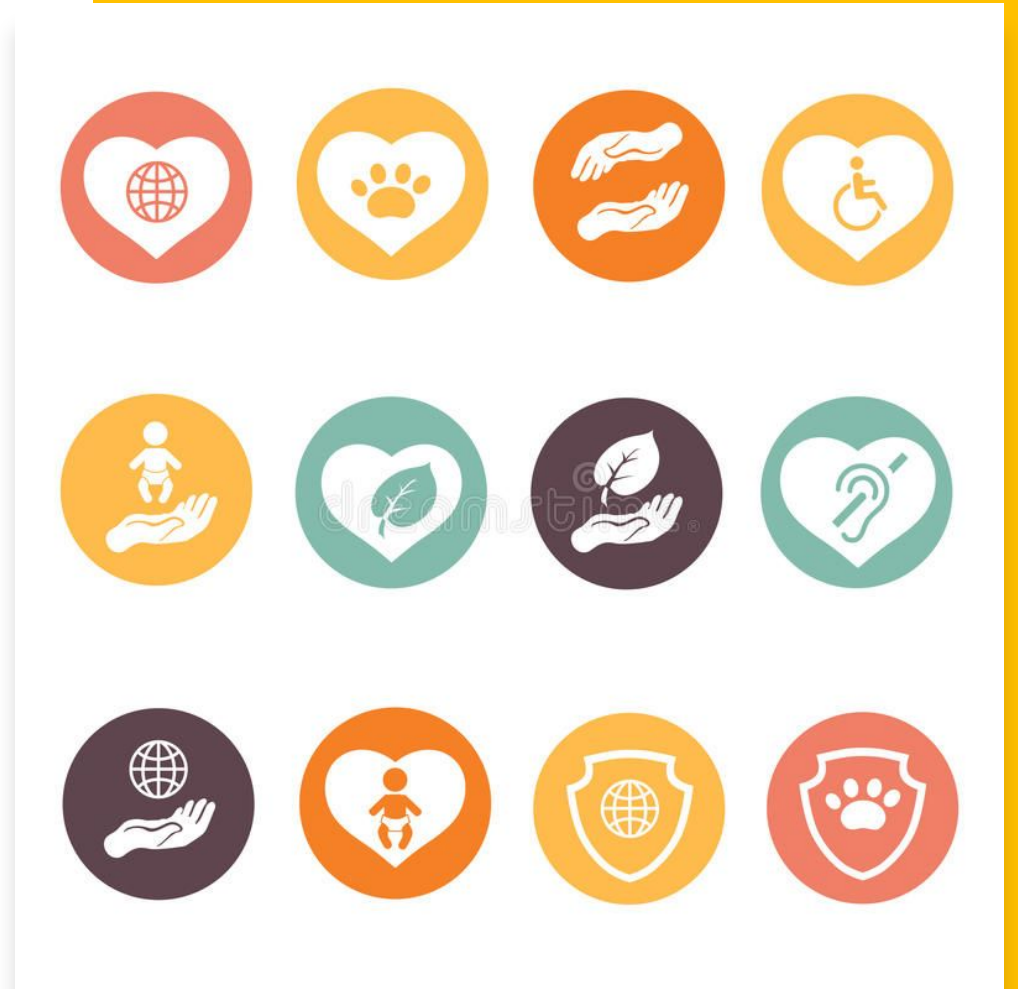
Image: UK Human Rights Blog

Lack of Services:

Migrant women are disproportionately at risk from:

- Gendered violence including domestic violence, sexual violence
- 'Honour-based' violence
- Forced marriage
- FGM and trafficking

Black racially minoritised and migrant women in England experience higher rates of domestic homicide and need specialist support. But, services for these women are being cut.



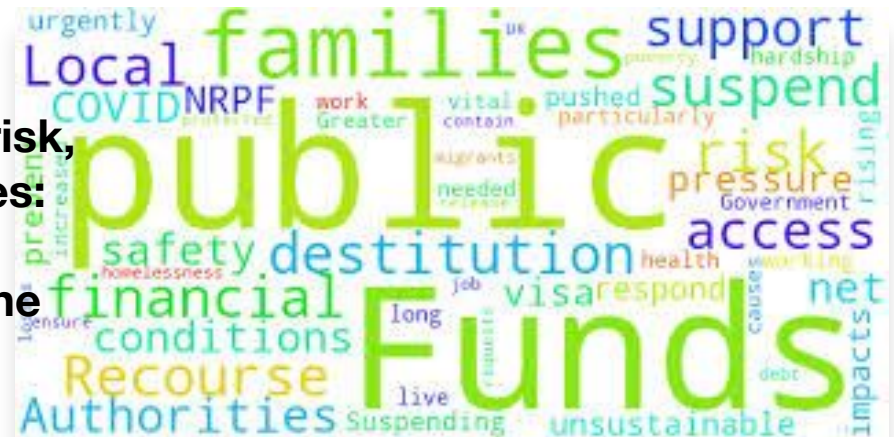
No Recourse to Public Funds:

According to the JCWI-(Joint Council for the Welfare of Immigrants):

Our new research shows the NRPF policy is a public health risk, and increases the risk of destitution amongst migrant families:

- a fifth of migrants surveyed, who were working before the pandemic, lost their job since it started;
- almost 75% of those were subject to NRPF, unable to access support from the government;
- 44% of those in hard-hit sectors cleaning and hospitality lost their jobs, and all of these were subject to NRPF;
- migrants with NRPF were 52% more likely to say that it was not possible to safely self-isolate in their home.

According to the charity Children's Society, the benefits ban starves 1 millions adults from outside the European Economic Area and 143,000 children from receiving public funds, instead granting high risks of destitution, exploitation and abuse.



Recommendations:

- Ring-fenced funding for VAWG services run 'by and for' Black and racially minoritised women
- Abolish the No Recourse to Public Funds Condition
- Use the Domestic Abuse Bill to ensure migrant women are no longer left behind
- A principle of non-discrimination in line with Article 4(3) of the Istanbul Convention to ensure all victims of domestic abuse have equal access to protection and support regardless of immigration status
- A provision to establish safe reporting mechanisms and an end to data-sharing for immigration enforcement purposes
- Extension of eligibility for the Domestic Violence (DV) Rule and Destitute Domestic Violence Concession (DDVC)
- A provision to ensure all victims of domestic abuse can access public funds and vital, often life-saving support and routes to safety; and that no survivor, whatever her immigration status, is treated as being in breach of her leave conditions for accessing those funds.

The Monitoring Group Contact Details



**2 Langley Lane, Vauxhall
London SW8 1GB**

Dorothea Jones

TWITTER - @Dori_J

EMAIL –

DJONES@TMG-UK.ORG

Michele Johnson

TWITTER - @bstgrl

Email-

mjohnson@tmg-uk.org



@MonitoringGroup



@TheMonitoringGroup



@raceandjustice

WEB:

[HTTPS://WWW.TMG-UK.ORG](https://www.tmg-uk.org)

TELE: 020 7582 7438